

# Section 200

## Pellet

2  
0  
2  
3  
-  
2  
0  
2  
4

Page Number	Vendor	Product	Sold Regionally	Publish Date
200-202	M & G DuraVent	PelletVent Pro 3" & 4" Systems		01/24
203-204	Reliance Liner	Freestanding Pellet Accessories		08/21
205-206	Reliance Liner	Pellet Insert Accessories		08/21
207	Z-Flex	Stainless Steel Flex Liner Kits, Liner and Accessories		02/24
208	Miscellaneous Flex Liner Components	Liner and Installation Accessories		05/14

**PLEASE NOTE:** Not all products are sold throughout all AES territories/regions. If "**Sold Regionally**" please contact AES Inside Sales for availability 800-682-9722

Or by visiting...



**DuraVent**  
Member of  M&G Group



For same day shipping, place order by: 1pm (CO), 2pm (CA, WA) and 11am (MN, TX). Give us a call at 1-800-682-9722

Associated Energy Systems - Serving you with distribution centers in: Kent, WA | West Sacramento, CA | Denver, CO | Dallas, TX | Rogers, MN

Stock: Y = Stock, N or \* = Non-Stock, LTSD = Limited to Stock on Hand

Non-Stock Item Notice: Items marked non-stock must be ordered in case quantities

## Pellet Vent, Liner & Custom Parts

### M & G Dura-Vent

PelletVent Pro™

**DuraVent**  
Member of M&G Group

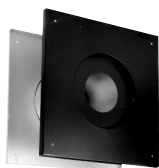
Dura-Vent PelletVent Pro provides a combination of both rigid and flexible pipe and accessories to provide the homeowner with a wide range of installation options, including:

- Horizontal through the wall installations
- Vertical through the ceiling and roof installations
- A-frame cathedral ceiling installations
- Chimney relining for pellet stove inserts

Dura-Vent PelletVent Pro is tested and listed to U.L. Standard 641, Type L and designed for venting pellet stoves, pellet inserts, pellet heaters and oil fired appliances.

#### Dura-Vent PelletVent Pro features:

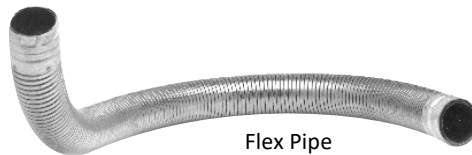
- Heavy duty construction for safe, trouble-free performance.
- 100% rivet construction, no spot weld corrosion.
- Laser Welded inside and out - for a sleek appearance and a silicone free installation. No silicone means a faster install and vent that is easy to take apart.
- 1" Clearance to combustibles for a low profile wall thimble.
- Swivel horizontal termination cap - for ultimate control of fly ash.
- Double wall, air insulated design with twist-lock connections on pipe and fittings.
- .012" 430 stainless steel inner liner resists heat and corrosive flue gases, .018" galvalume steel outer wall.
- Pipe joints sealed with ceramic gaskets, fittings sealed with high temperature silicone to prevent fly ash leakage.
- Heavy duty stainless flex for chimney relining.
- Pellet Vent is U.L. and U.L.C. listed.
- 25-year warranty.



Wall Thimble



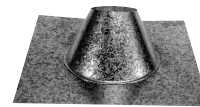
Adjustable Length



Flex Pipe



Storm Collar



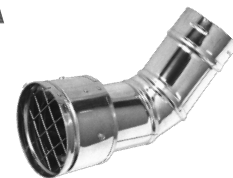
Adjustable Roof Flashing



90° Elbow



Vertical Cap



Horizontal Cap



Straight Length



Single Tee w/Clean-out Adapter



Wall Strap



Chimney Adapter



Increaser



Pipe Adapter

For same day shipping, place order by: 1pm (CO), 2pm (CA, WA) and 11am (MN, TX). Give us a call at 1-800-682-9722

Stock: Y = Stock, N or \* = Non-Stock, LTSD = Limited to Stock on Hand

Non-Stock Item Notice: Items marked non-stock must be ordered in case quantities


**Pellet Vent, Liner & Custom Parts**

**M & G Dura-Vent**  
3" & 4" PelletVent Pro



2  
0  
2  
3  
-  
2  
0  
2  
4

*PelletVent Pro is not compatible with traditional pellet vent.*

<b>Pipe Lengths</b>						
 <b>For stock status, please visit <a href="http://orders.aes4home.com">orders.aes4home.com</a> or call 800-682-9722</b>						
Item No.	Description	Pkg.	3"		4"	
			Wt./Cs.	Retail	Wt./Cs.	Retail
SD__PVP06	6" Straight Length Pipe	6	5 lbs.	\$48.87	6 lbs.	\$52.29
SD__PVP12	12" Straight Length Pipe	6	8 lbs.	70.00	11 lbs.	74.77
SD__PVP24	24" Straight Length Pipe	6	16 lbs.	92.48	20 lbs.	116.79
SD__PVP36	36" Straight Length Pipe	6	22 lbs.	126.83	30 lbs.	151.67
SD__PVP60	60" Straight Length Pipe	6	38 lbs.	181.28	47 lbs.	205.59
SD__PVP12A	12" Adjustable Length Pipe	6	9 lbs.	95.12	11 lbs.	105.17
SD__PVP18A	18" Adjustable Length Pipe	6	9 lbs.	146.12	11 lbs.	161.72
SD__PVP48A	48" Adjustable Length Pipe	6	9 lbs.	191.49	11 lbs.	227.39
SD__PVP60F	60" Flex Pipe	1	3 lbs.	311.57	24 lbs.	445.83
<b>Pipe Lengths - Black (Special Order in Case Quantities Only)</b>						
SD__PVP06B	6" Straight Length Pipe (Black)	6	5 lbs.	\$68.68	6 lbs.	\$85.35
SD__PVP12B	12" Straight Length Pipe (Black)	6	8 lbs.	91.95	11 lbs.	118.11
SD__PVP24B	24" Straight Length Pipe (Black)	6	16 lbs.	114.93	20 lbs.	159.33
SD__PVP36B	36" Straight Length Pipe (Black)	6	23 lbs.	143.48	30 lbs.	186.84
SD__PVP60B	60" Straight Length Pipe (Black)	6	38 lbs.	214.85	41 lbs.	247.60
SD__PVP12AB	12" Adjustable Length Pipe (Black)	6	9 lbs.	113.61	11 lbs.	149.29
SD__PVP18AB	18" Adjustable Length Pipe (Black)	6	9 lbs.	174.66	11 lbs.	229.64
SD__PVP48AB	48" Adjustable Length Pipe (Black)	6	9 lbs.	251.32	11 lbs.	287.23
<b>Supports and Firestops</b>						
SD__PVPCS	Cathedral Ceiling Support Box	1	7 lbs.	\$209.88	7 lbs.	\$209.88
SD__PVPFS	Ceiling Support Firestop Spacer (For 1" Clearance)	6	11 lbs.	101.21	12 lbs.	118.11
SD3PVPWTC	Ceiling Support Cover/Wall Thimble Cover	1	3 lbs.	108.59	-	-
Installed where Pellet Vent passes through a floor or ceiling and centers pipe to provide proper clearances.						
SD__PVPWT	Wall Thimble (For 1" Clearance)	6	17 lbs.	132.11	17 lbs.	141.90
SD__PVPWTI	4" Wall Thimble Air Intake Kit (Includes SD__PVPWT, 2" Aluminum Flex and 2 Hose Clamps.)	6	16 lbs.	308.93	17 lbs.	331.91
SD__PVPHS	House Shield	6	6 lbs.	52.82	6 lbs.	77.95
For blower discharge protection in horizontal venting situations.						
<b>Caps and Flashings</b>						
SD__PVPVC	Vertical Cap	6	7 lbs.	\$114.93	8 lbs.	\$122.60
SD__PVPHC2	Horizontal Cap	6	6 lbs.	87.02	6 lbs.	98.38
SD__PVPF6	Adjustable Roof Flashing	6	14 lbs.	39.61	12 lbs.	44.12
SD__PVFFF	Tall Cone Roof Flashing	6	2 lbs.	52.82	18 lbs.	58.38
SD__PVPSC	Storm Collar	6	1.7 lbs.	11.34	2 lbs.	13.19

For same day shipping, place order by: 1pm (CO), 2pm (CA, WA) and 11am (MN, TX). Give us a call at 1-800-682-9722

Stock: Y = Stock, N or \* = Non-Stock, LTSD = Limited to Stock on Hand

Non-Stock Item Notice: Items marked non-stock must be ordered in case quantities

**Pellet Vent, Liner & Custom Parts**

**M & G Dura-Vent**  
3" & 4" PelletVent Pro, Continued



**Tees and Elbows**



*For stock status, please visit [orders.aes4home.com](http://orders.aes4home.com) or call 800-682-9722*

Item No.	Description	Qty.	3"		4"	
			Wt./Cs.	Retail	Wt./Cs.	Retail
SD__PVPT1	Single Tee w/Clean-Out Tee Cap	6	15 lbs.	\$207.19	15 lbs.	\$216.70
SD4PVPT31	Increaser Tee w/Clean-Out Tee Cap	6	-	-	11 lbs.	\$210.86
SD__PVPCO1	Clean-Out Tee Cap	6	3 lbs.	77.95	15 lbs.	77.95
SD__PVPTAD1	Adapter Tee w/Clean-Out Tee Cap	6	11 lbs.	207.19	15 lbs.	216.71
SD__PVPDBT1	Double Tee w/Clean-Out Tee Cap	6	11 lbs.	404.49	15 lbs.	433.23
SD__PVPWS	Wall Strap	6	7 lbs.	47.29	6 lbs.	51.25
SD__PVPWSA	Adjustable Wall Strap	6	7 lbs.	51.50	6 lbs.	55.74
SD__PVPE45	45° Elbow	6	5 lbs.	123.66	8 lbs.	140.05
SD__PVPE90	90° Elbow	6	8 lbs.	154.59	11 lbs.	194.50

**Tees and Elbows - Black (Special Order in Case Quantities Only)**

SD__PVPTB1	Single Tee w/Clean-Out Tee Cap (Black)	6	11 lbs.	\$225.15*	15 lbs.	\$239.94*
SD4PVPT3B1	Increaser Tee w/Clean-Out Tee Cap (Black)	6	-	-	11 lbs.	\$236.52*
SD__PVPCOB1	Clean-Out Tee Cap (Black)	6	3 lbs.	89.95*	15 lbs.	95.96*
SD3PVPTADB1	Adapter Tee w/Clean-Out Tee Cap (Black)	6	-	225.14*	15 lbs.	-
SD__PVPDBTB1	Double Tee w/Clean-Out Tee Cap (Black)	6	-	404.49*	15 lbs.	433.23*
SD__PVPE45B	45° Elbow (Black)	6	5 lbs.	137.92*	8 lbs.	174.15*
SD__PVPE90B	90° Elbow (Black)	6	8 lbs.	174.15*	11 lbs.	226.72*

**Accessories**

SD__PVPIS	Attic Insulation Shield	1	5 lbs.	\$106.49	5 lbs.	\$106.49
SD__PVPX6	Chimney Adapter - 6"	6	12 lbs.	168.60	12 lbs.	177.04
SD__PVPX8	Chimney Adapter - 8"	6	14 lbs.	208.23	9 lbs.	214.32
SD__PVPAD	Appliance Adapter	1	1 lbs.	38.03	4 lbs.	41.20
SD__PVPADFF	Female Flex Adapter	6	3 lbs.	47.97	3 lbs.	39.61
SD__PVPADFM	Male Flex Adapter	6	3 lbs.	65.97	3 lbs.	71.95
SD__PVPRC	Reduction Collar	6	3 lbs.	41.97	3 lbs.	41.97
SD3PVPX4	Increaser 3" - 4"	6	7 lbs.	119.94	-	-
SD3PVPX4AD	Appliance Adapter/Increaser 3" - 4"	6	6 lbs.	138.99	-	-

**Accessories - Black (Special Order in Case Quantities Only)**

SD__PVPADB	Appliance Adapter (Black)	1	1 lbs.	\$57.06	4 lbs.	\$107.94*
SD3PVPX4ADB	Appliance Adapter/Increaser 3" - 4" (Black)	6	6 lbs.	181.00	-	-

**PelletVent Pro Kits**

SD__PVPKHA	PelletVent Pro Horizontal Kit (includes: Round Horizontal Cap, Wall Thimble [For 1" Clearance], Appliance Adapter)	1	15 lbs.	\$369.97	19 lbs.	\$461.61
SD__PVPKVA	PelletVent Pro Vertical Kit - Flat Ceiling (includes: Vertical Cap, Storm Collar, Ceiling Support Firestop Spacer [For 1" Clearance], Adjustable Flashing, Appliance Adapter)	1	16 lbs.	491.55	19 lbs.	528.54
SD__PVPKVB	PelletVent Pro Vertical Kit - Cathedral (includes: Vertical Cap, Storm Collar, Cathedral Ceiling Support Box, Adjustable Flashing, Appliance Adapter)	1	16 lbs.	385.83	19 lbs.	692.41

For same day shipping, place order by: 1pm (CO), 2pm (CA, WA) and 11am (MN, TX). Give us a call at 1-800-682-9722

Stock: Y = Stock, N or \* = Non-Stock, LTSD = Limited to Stock on Hand

Non-Stock Item Notice: Items marked non-stock must be ordered in case quantities

## Liner Accessories by American Hearth

Pellet Vent Liner Systems



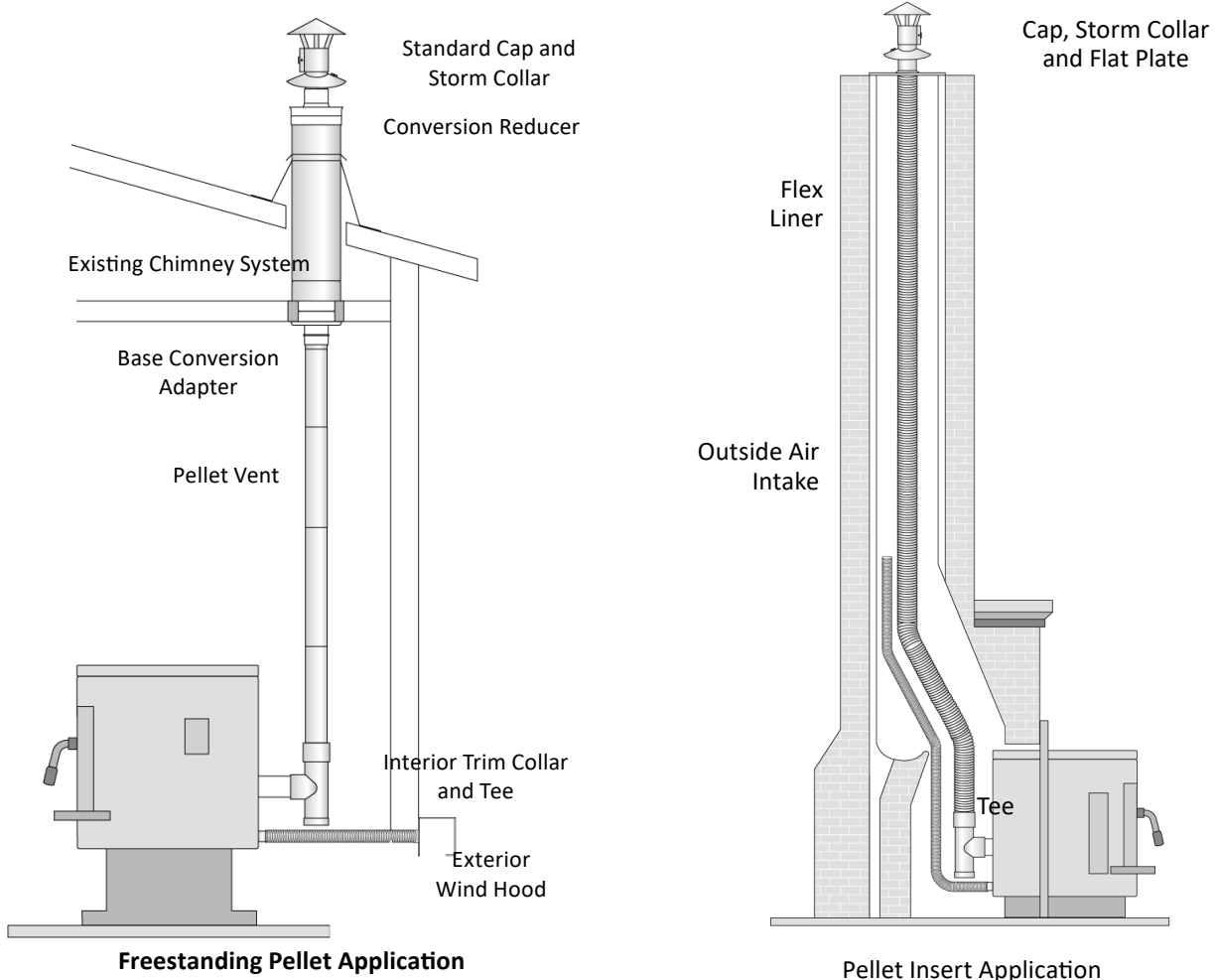
2  
0  
2  
3  
-  
2  
0  
2  
4

American Hearth is the leading Northwest supplier of pellet liner systems providing AES with custom relining components since 1972. Because of the unique and long lasting relationship between the two companies, we are able to stock the most extensive variety of reline components for both freestanding and pellet insert retrofitting and new installations into an existing chimney or fireplace.

All lining components are made of 24-gauge 304 stainless steel welded seam construction and are tested to UL 1777 standards.

Reliance Liner also offers Masonry Liner Systems for woodburning appliances. With over 30 years of experience with chimney relines, American Hearth Products "Reliance Liner" has developed a reputation in the Northwest for fast and capable fabrication of almost any custom element of a chimney reline system.

For assistance building your next reline system call AES Inside Sales.



For same day shipping, place order by: 1pm (CO), 2pm (CA, WA) and 11am (MN, TX). Give us a call at 1-800-682-9722

Stock: Y = Stock, N or \* = Non-Stock, LTSD = Limited to Stock on Hand

Non-Stock Item Notice: Items marked non-stock must be ordered in case quantities

**Pellet Vent, Liner & Custom Parts**

**Liner Accessories by American Hearth**  
3" - 4" Freestanding Pellet Vent Liner Systems



**Class A Chimney Conversion Reducers**

Sized for Dura-Vent pellet vent to Class A Chimney. Seals for a complete vent system. For exterior use.

Item No.	Description	Chimney Size	Retail	Stocked
RM38REDDV	3" x 8-1/8" Conversion Reducer	8" O.D.	\$61.00	Y
RM310REDDV	3" x 10-1/8" Conversion Reducer	10" O.D.	56.00	Y
RM48REDDV	4" x 8-1/8" Conversion Reducer	8" O.D.	61.00	Y
RM410REDDV	4" x 10-1/8" Conversion Reducer	10" O.D.	56.00	Y

**Base Conversion Adapters**

Universal fit sized for Class A chimney, painted black. Includes trim ring. Connects pellet or gas vent to the base of existing chimneys. For interior use.

RM36BCADV	3" Base Conversion Adapter for DuraVent	6" I.D.	\$71.00	Y
RM37BCADV	3" Base Conversion Adapter for DuraVent	7" I.D.	75.00	Y
RM38BCADV	3" Base Conversion Adapter for DuraVent	8" I.D.	77.00	Y
RM46BCADV	4" Base Conversion Adapter for DuraVent	6" I.D.	73.00	Y
RM47BCADV	4" Base Conversion Adapter for DuraVent	7" I.D.	77.00	Y
RM48BCADV	4" Base Conversion Adapter for DuraVent	8" I.D.	79.00	Y
RM410BCADV	4" Base Conversion Adapter for DuraVent	10" I.D.	82.00	Y
RM36BCAIC	3" Base Conversion Adapter for ICC for DuraVent	6" I.D.	71.00	Y
RM38BCAIC	3" Base Conversion Adapter for ICC for DuraVent	8" I.D.	77.00	Y
RM46BCAIC	4" Base Conversion Adapter for ICC for DuraVent	6" I.D.	73.00	Y
RM48BCAIC	4" Base Conversion Adapter for ICC for DuraVent	8" I.D.	79.00	Y

**Accessories**

RM158BLKTC	1-7/8" I.D. Black Interior Trim Collar	\$14.00	Y
RM2BLKTC	2-1/4" I.D. Black Interior Trim Collar	15.00	Y
To finish interior holes of outside air vent pass through.			
RM134WH	Exterior Wind Hood - 1 7/8" Hole - For use w/ Rodent Screen	17.00	Y
RM214RS	Rodent Screen, 2-1/4"	8.00	Y

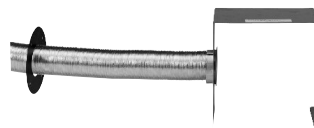
Designed to keep debris and rodents clear of vent passage.

**Aluminum Flex and Galvanized Steel Flex for Outside Air**

ZFAF225	(ZF1TLXXXX0225) 2" x 25' Outside Air Aluminum Flex	\$91.00	Y
---------	--	---------	---



Intake Flex



Exterior Wind Hood



Trim Collar



Conversion Reducer



Base Conversion Adapter

For same day shipping, place order by: 1pm (CO), 2pm (CA, WA) and 11am (MN, TX). Give us a call at 1-800-682-9722

Stock: Y = Stock, N or \* = Non-Stock, LTSD = Limited to Stock on Hand

Non-Stock Item Notice: Items marked non-stock must be ordered in case quantities

**Pellet Vent, Liner & Custom Parts**

**Liner Accessories by American Hearth**

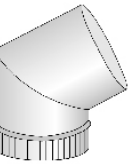


2  
0  
2  
3  
-  
2  
0  
2  
4

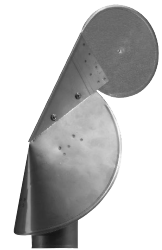
3" Pellet Insert Liner System



Length



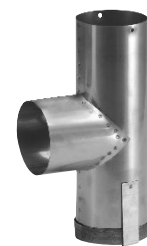
45° Elbow



Wind Directional Cap



Weatherband Cap



Pellet Tee

<b>3" Vent Pieces</b>			
<i>Item No.</i>	<i>Description</i>	<i>Retail</i>	<i>Stocked</i>
RM312	12" Length	\$30.00	N
RM3X6BLK	3" x 6" Reducer-Increaser, Black	37.00	Y
RM3X8BLK	3" x 8" Reducer-Increaser, Black	42.00	Y
Matte black. Small end undersized. One piece spun collar.			
<b>3" Termination Caps</b>			
RM3DC	Drawband Cap	\$47.00	N
Adjusts for secure fit.			
RM3WB	Weatherband Cap	66.00	N
For high wind applications. Design naturally induces draft.			
<b>3" Storm Collars</b>			
RM3SC	3" Storm Collar	\$25.00	N
<b>3" Flat Plates</b>			
Diameter is oversized to accommodate flex. Spin collar on Dura-Vent Flat Plates is 3/4" larger than regular Flat Plates.			
RM31616FP	16" x 16" Flat Plate	57.00	Y
RM32424FP	24" x 24" Flat Plate	68.00	Y
RM31616FPDV	16" x 16" Flat Plate for Dura-Vent	57.00	N
<b>3" Tees</b>			
RM3TR	3" True Tee Inlet, Fits Most Pellet Exhausts	\$43.00	Y
ZF2ZPT03	3" Tee for Enviro, Whitfield, With Quick Connect Band	95.00	Y
RM3EXT	8" Long Extension for OC3T, fits Breckwell Pellet Inserts	22.00	Y

For same day shipping, place order by: 1pm (CO), 2pm (CA, WA) and 11am (MN, TX). Give us a call at 1-800-682-9722

Stock: Y = Stock, N or \* = Non-Stock, LTSD = Limited to Stock on Hand

Non-Stock Item Notice: Items marked non-stock must be ordered in case quantities



**Pellet Vent, Liner & Custom Parts**

**Liner Accessories by American Hearth**

4" Pellet Insert Liner System



<b>4" Vent Pieces</b>			
<i>Item No.</i>	<i>Description</i>	<i>Retail</i>	<i>Stocked</i>
RM412	12" Length	\$30.00	N
RM424	24" Length	57.00	N
RM436	36" Length	76.00	N
Eliminates cutting with 14" of adjustability.			
RM4X6BLK	4" x 6" Reducer-Increaser	35.00	Y
RM4X8BLK	4" x 8" Reducer-Increaser	38.00	Y
Matte black. Small end undersized. One piece spun collar.			
<b>4" Termination Caps</b>			
RM4DC	Drawband Cap	\$47.00	N
Adjusts for secure fit.			
RM4WB	Weatherband Cap	76.00	N
For high wind applications. Design naturally induces draft.			
RM4WD	Wind Directional Cap	125.00	N
Reduces downdrafts for high wind applications and extreme weather conditions.			
<b>4" Storm Collars</b>			
RM4SC	4" Storm Collar	\$26.00	Y
<b>4" Flat Plates</b>			
Diameter is oversized to accommodate flex.			
RM41616FP	16" x 16" Flat Plate	57.00	Y
RM42424FP	24" x 24" Flat Plate	71.00	Y
<b>4" Tees</b>			
RM4T	4" Tee for Enviro, Whitfield, With Quick Connect Band	\$58.00	Y
RM3X4T	3" x 4" Tee for Whitfield, 3" Inlet Slightly Undersized	30.00	Y
RM3X4TR	3" x 4" True Tee, 3" True Inlet, Fits Most Pellet Exhausts	67.00	Y
RM4TR	4" True Tee Inlet, Fits Most Pellet Exhausts	58.00	Y
RM3X4W	3" x 4" Increaser for Whitfield, 3" Inlet Slightly Undersized	30.00	Y
Use with RM4TR to increase exhaust sizing.			



90° Elbow



Reducer-Increaser



Wind Directional Cap



Drawband Cap w/Spark Screen



Weatherband Cap

For same day shipping, place order by: 1pm (CO), 2pm (CA, WA) and 11am (MN, TX). Give us a call at 1-800-682-9722

Stock: Y = Stock, N or \* = Non-Stock, LTSD = Limited to Stock on Hand

Non-Stock Item Notice: Items marked non-stock must be ordered in case quantities



**Pellet Vent, Liner & Custom Parts**

**Z-Flex**

Flexible Stainless Steel Liners & Liner Kits



2  
0  
2  
3  
-  
2  
0  
2  
4

**Z-Flex Stainless Steel liners**

.005 thickness, 316TI stainless steel, U.L. listed. Lighter weight, welded design provides greater flexibility for standard installations.

Item No.	Description	Wt.	Retail	Stocked
ZF320KSN	(ZF2ZPK0320) 3" x 20' Stainless Steel Flex Liner Kit w/18"x18" Flat Plate and Cap	16 lbs.	\$400.00	Y
ZF325KSN	(ZF2ZPK0325) 3" x 25' Stainless Steel Flex Liner Kit w/18"x18" Flat Plate and Cap	17 lbs.	500.00	Y
ZF325LSN	(ZF2ZLSSXX0325AES) 3" x 25' Corrugated Stainless Steel Flex Liner Only	12 lbs.	470.00	Y
ZF350LSN	(ZF2ZLSSXX0350AES) 3" x 50' Stainless Steel Flex Liner Only	20 lbs.	842.00	Y
ZF3T	(ZF2ZPT03) 3" Tee for Enviro, Whitfield, with Quick Connect Band	1 lb.	95.00	Y
ZF3X4T	(ZF2ZPT43) 3" X 4" Tee with Cap and Quick Disconnect Band	1 lb.	115.00	Y
ZFQCLF3	(ZF2CNNTRC03) 3" Quick Flex Connector	1 lb.	68.00	Y
ZFTPNS31818	(ZF2AFCX03) 3" No Sag Top Plate 18" x 18"	4.8 lbs.	99.00	N
ZFCSLF3	(ZF2ZMRCS03) 3" Quick Cap With Screen	1 lb.	97.00	Y
ZF420KSN	(ZF2ZPK0420) 4" x 20' Stainless Steel Flex Liner Kit w/18"x18" Flat Plate and Cap	18 lbs.	523.00	Y
ZF425KSN	(ZF2ZPK0425) 4" x 25' Stainless Steel Flex Liner Kit w/18"x18" Flat Plate and Cap	20 lbs.	650.00	Y
ZF435KSN	(ZF2ZPK0435) 4" x 35' Stainless Steel Flex Liner Kit w/18"x18" Flat Plate and Cap	24 lbs.	651.00	Y
ZF425LSN	(ZF2ZLSSXX0425) 4" x 25' Corrugated Stainless Steel Flex Liner Only	15 lbs.	623.00	Y
ZF450LSN	(ZF2ZLSSXX0450AES) 4" x 50' Corrugated Stainless Steel Flex Liner Only		1,357.00	Y
ZFQCLF4	(ZF2CNNTRC04) 4" Quick Flex Connector	1 lb.	70.00	Y
ZFTPNS41818	(ZF2AFCX04) 4" No Sag Top Plate 18" x 18"		99.00	N
ZFCSLF4	(ZF2ZMRCS04) 4" Quick Cap With Screen	1 lb.	100.00	N



For same day shipping, place order by: 1pm (CO), 2pm (CA, WA) and 11am (MN, TX). Give us a call at 1-800-682-9722

Stock: Y = Stock, N or \* = Non-Stock, LTSD = Limited to Stock on Hand

Non-Stock Item Notice: Items marked non-stock must be ordered in case quantities

**Pellet Vent, Liner & Custom Parts**

## Flex Liner

Components & Accessories

### Flex Liner

<b>Nose Cone</b>			
To assist in the installation of difficult relines with offsets or other obstructions. Reliance brand, 24-gauge, 304 stainless steel. Recommended for use with Hi-Per-Flex liners.			
<i>Item No.</i>	<i>Description</i>	<i>Retail</i>	<i>Stocked</i>
RM3NC	3" Nose Cone	\$47.00	N
<b>Aluminum Flex and Galvanized Steel Flex for Outside Air</b>			
ZFAF225	(ZF1TLXXX0225) 2" x 25' Outside Air Aluminum Flex	\$91.00	Y
<b>Installation Supplies</b>			
AT2150	2" x 150' Aluminum Tape	\$26.90	Y
For wrapping each pellet pipe joint.			
SRDURA	#7 x 1/4" Short Screw (100 pkg.)	9.00	Y



Nose Cone

### Installation Supplies

For attaching pellet vent or gas vent together. Will not penetrate inner liner. Requires 1/4" hex head driver.			
<i>Item No.</i>	<i>Description</i>	<i>Retail</i>	<i>Stocked</i>
RT76R	600° RTV Silicone Super Red, 10 oz. Cartridge	\$19.30	Y
RT76RT	600° RTV Silicone Super Red, 3 oz. Tube	9.00	Y
Forms a tough rubbery seal, keeps its flexibility up to 550° F.			
RT641	800° Seal it Right Silicone Sealant, 10.3 oz. Cartridge	\$17.93	Y

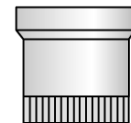


Aluminum Tape

#### **Stainless Steel Flex Coupler**

Reliance brand, 24-gauge, 304 stainless steel. Used to join flexible lining material to liner.

<i>Item No.</i>	<i>Description</i>	<i>Retail</i>	<i>Stocked</i>
RM3FC	3" Stainless Steel Flex Coupler	\$23.00	N



Flex Coupler

For same day shipping, place order by: 1pm (CO), 2pm (CA, WA) and 11am (MN, TX). Give us a call at 1-800-682-9722

Stock: Y = Stock, N or \* = Non-Stock, LTSD = Limited to Stock on Hand

Non-Stock Item Notice: Items marked non-stock must be ordered in case quantities